

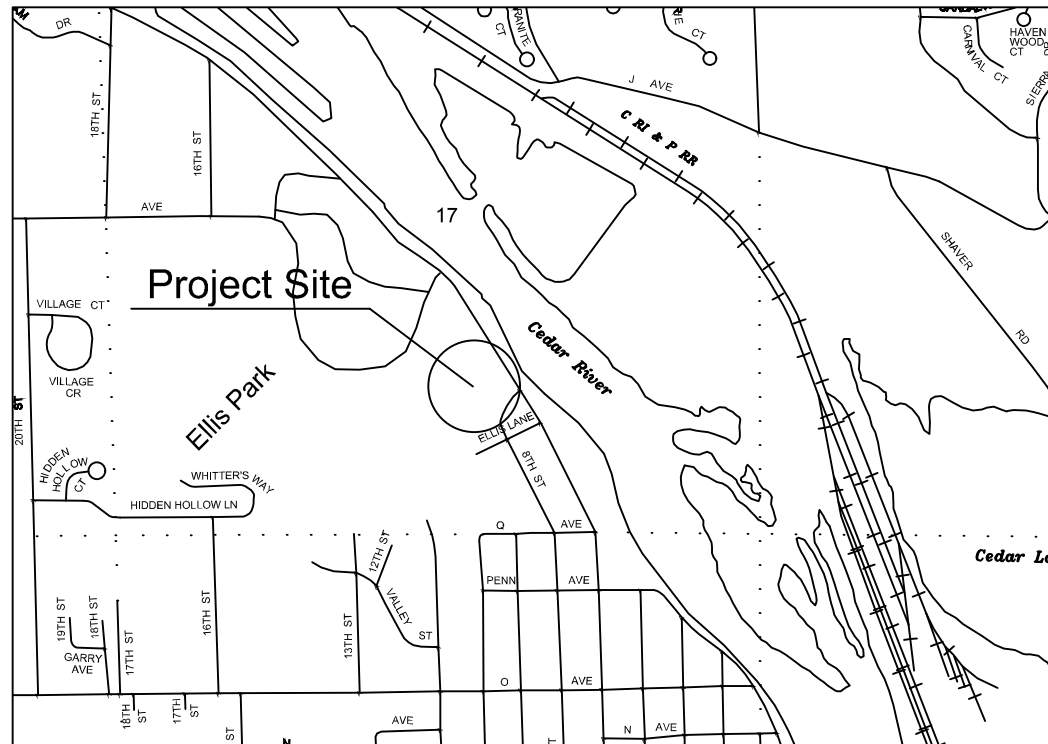
Ellis Pool Concrete Repairs

City of Cedar Rapids, Iowa

Contract No. 324246-02

Utility & Emergency Numbers

Parks & Recreation Department	319-286-5750
Police Department	319-286-5491
Fire Department	319-286-5200
Emergency	911
Alliant Energy	319-786-1912
Mid American Energy	319-298-5155
Water Department	319-286-5910
Qwest Communications	319-399-7600



Location Map

Not to Scale

Sheet Index

	Cover Sheet
S1	Existing Conditions
S2	Site Plan
S3-S4	Details
S5	Previous Site Plan (reference)
P1	Waterline Repair

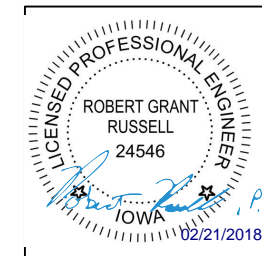
Cedar Rapids Metropolitan Specifications

Sections most prevalent to this project

Division 03 Concrete

Mayor: Bradley Hart
City Council

Tyler Olson	Ann Poe
Susie Weinacht	Martin Hoeger
Scott Overland	Dale Todd
Scott Olson	Ashley Vanorny



I hereby certify that this document was prepared by me or under my direct personal supervision and that I am a duly Licensed Professional Engineer under the laws of the State of Iowa.

Robert Grant Russell, P.E.

R. Grant Iowa Reg No. P24546

My License renewal date is December 31, 2019

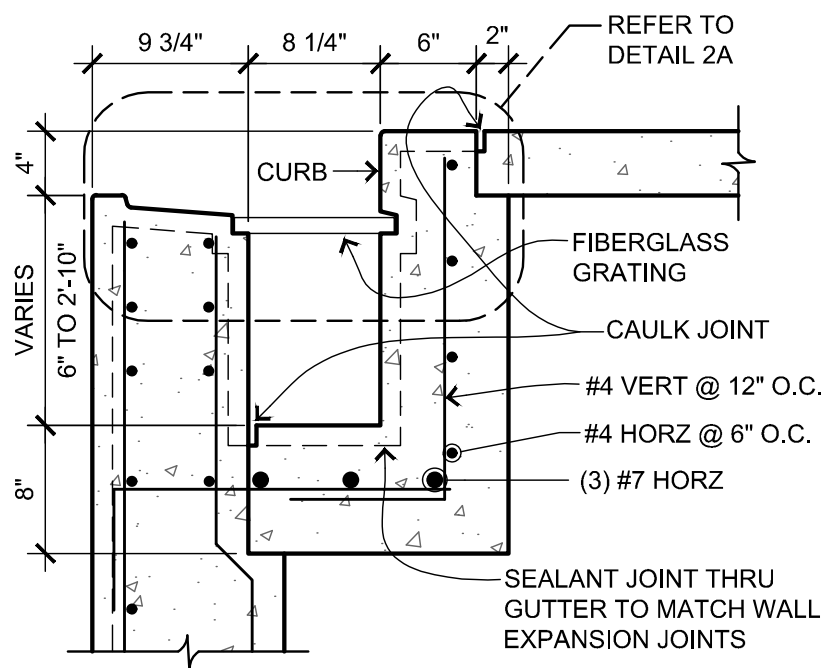
Pages covered by this seal: S1, S2, S3, S4, S5, P1

Cedar Rapids Parks & Recreation Department

This Document is Recommended for Filing with the City Clerk

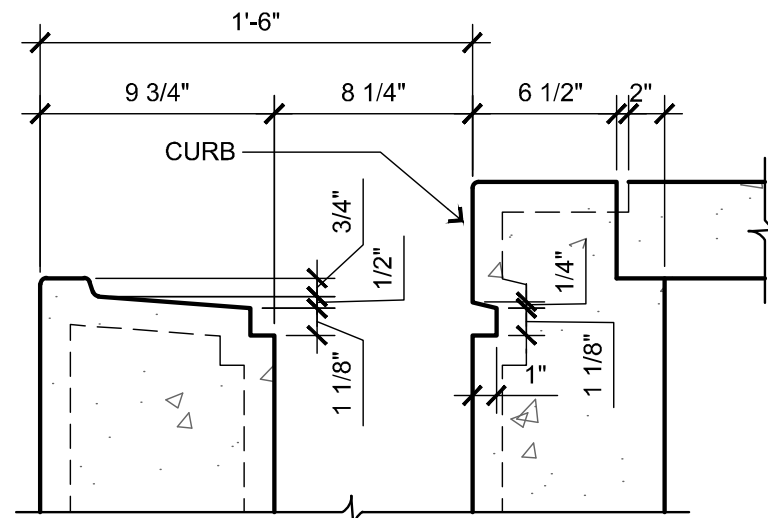
Director, Parks & Recreation

Date



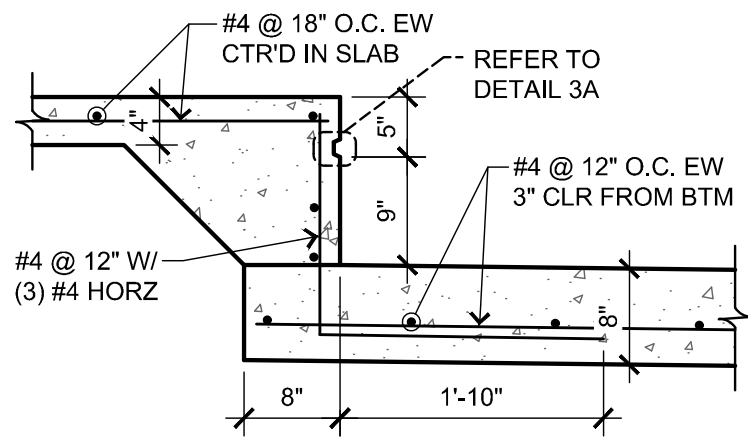
2 SECTION TYP EXISTING GUTTER

SCALE: 1" = 1'-0"



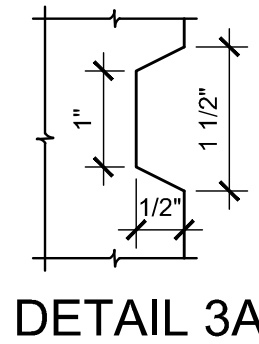
DETAIL 2A

SCALE: 1 1/2" = 1'-0"



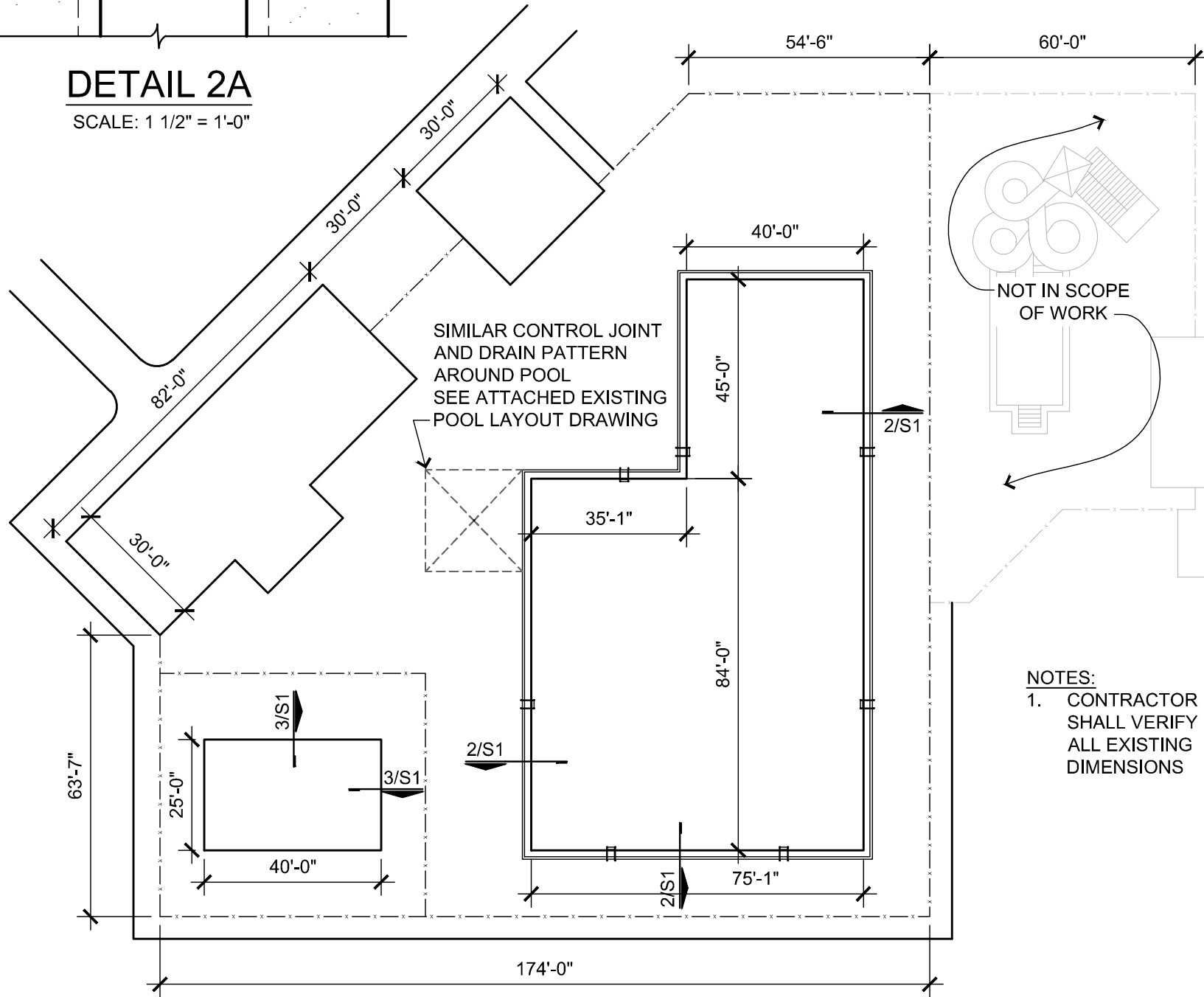
3 SECTION TYP WADING POOL PERIMETER WALL

SCALE: 3/4" = 1'-0"



DETAIL 3A

SCALE: 1:2

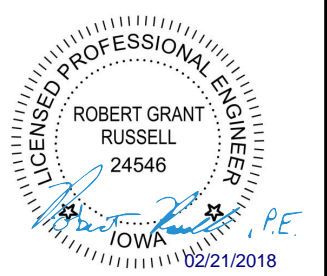


1 EXISTING POOL PLAN

SCALE: 1/32" = 1'-0"



Norton & Schmidt
 Consulting Engineers, L.L.C.
 North Kansas City, MO • Atlanta, GA
 311 East 11th Avenue
 North Kansas City, MO 64116
 Phone: (816) 421-4232
 Fax: (816) 421-1956
 www.nortonschmidt.com
 N&S JOB NUMBER: 2017-2280
 © 2017 Norton & Schmidt Consulting Engineers



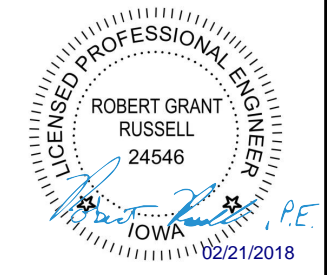
ELLIS MUNICIPAL POOL REPAIRS

2000 Ellis Blvd NW
 Cedar Rapids, IA 52405
 Owner: City of Cedar Rapids, IA

DATE:	DESCRIPTION:
02/21/18	BID SET

S1

NOTES:
 1. CONTRACTOR SHALL VERIFY ALL EXISTING DIMENSIONS



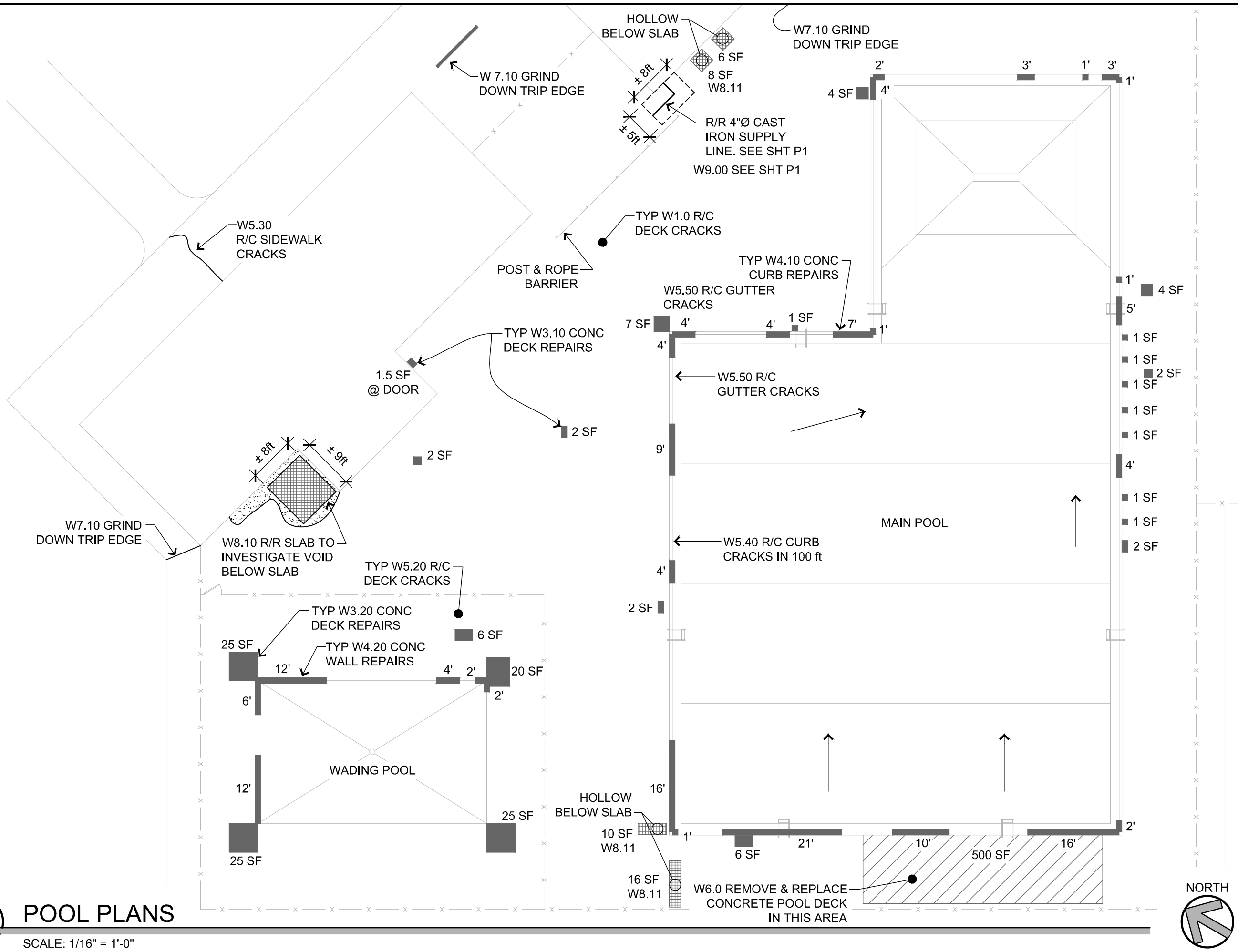
ELLIS MUNICIPAL POOL REPAIRS

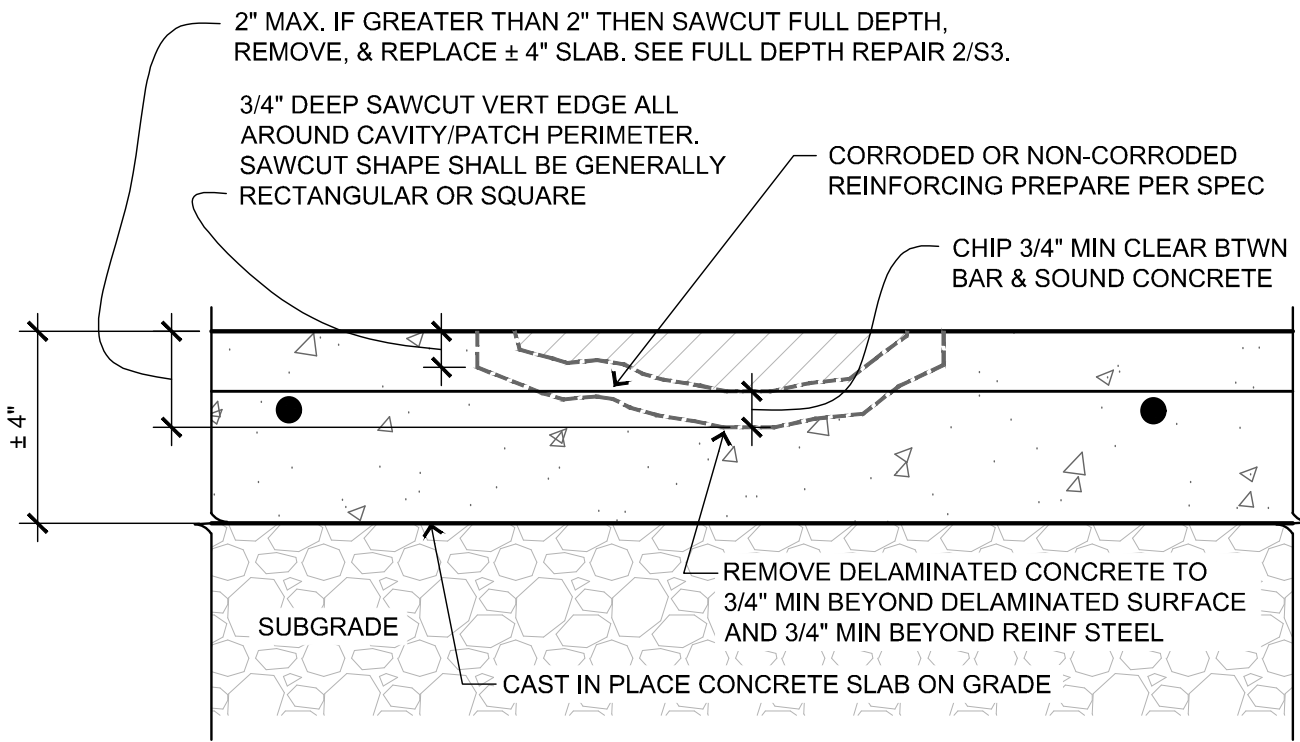
2000 Ellis Blvd NW
 Cedar Rapids, IA 52405
 Owner: City of Cedar Rapids, IA

DATE:	DESCRIPTION:
02/21/18	BID SET

S2

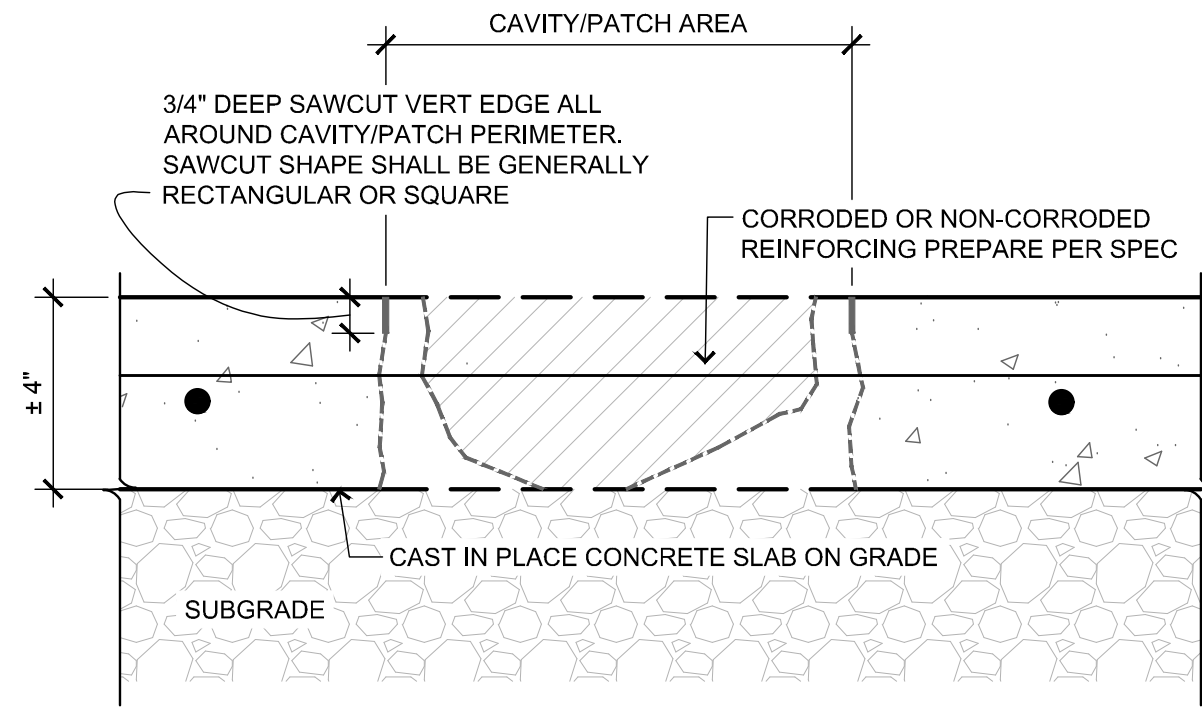
1 POOL PLANS
 SCALE: 1/16" = 1'-0"





1 POOL - CONCRETE DECK SLAB-ON-GRADE PARTIAL DEPTH REPAIR

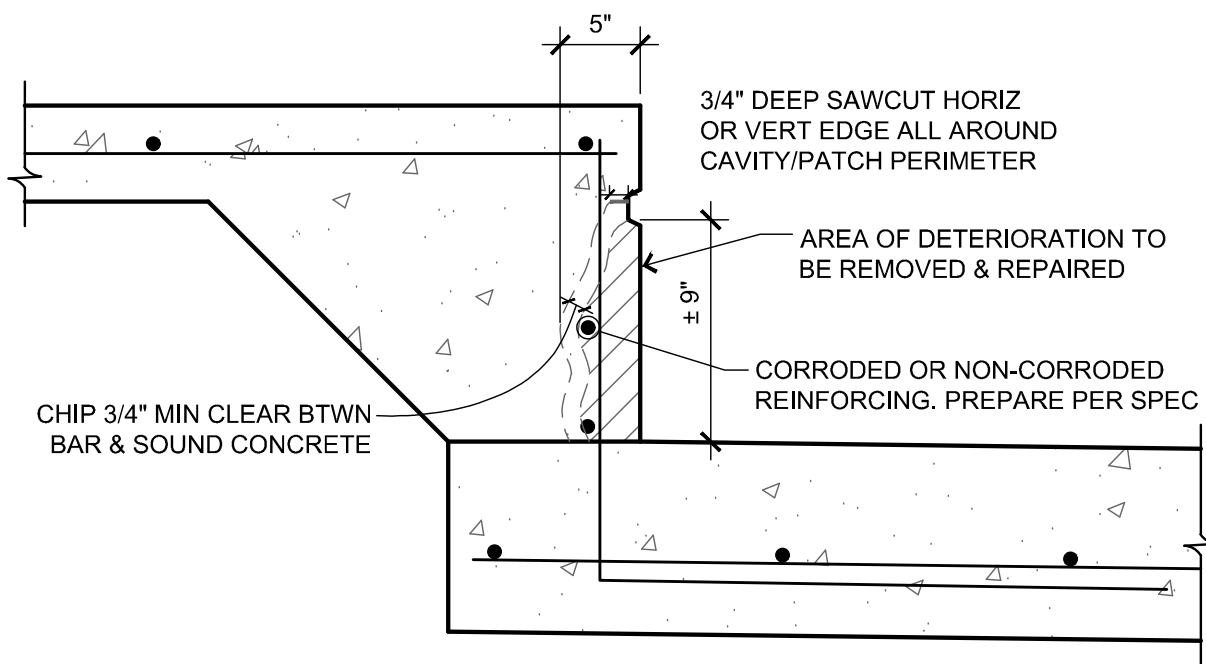
SCALE: 3" = 1'-0"



2 POOL - CONCRETE DECK SLAB-ON-GRADE FULL DEPTH REPAIR

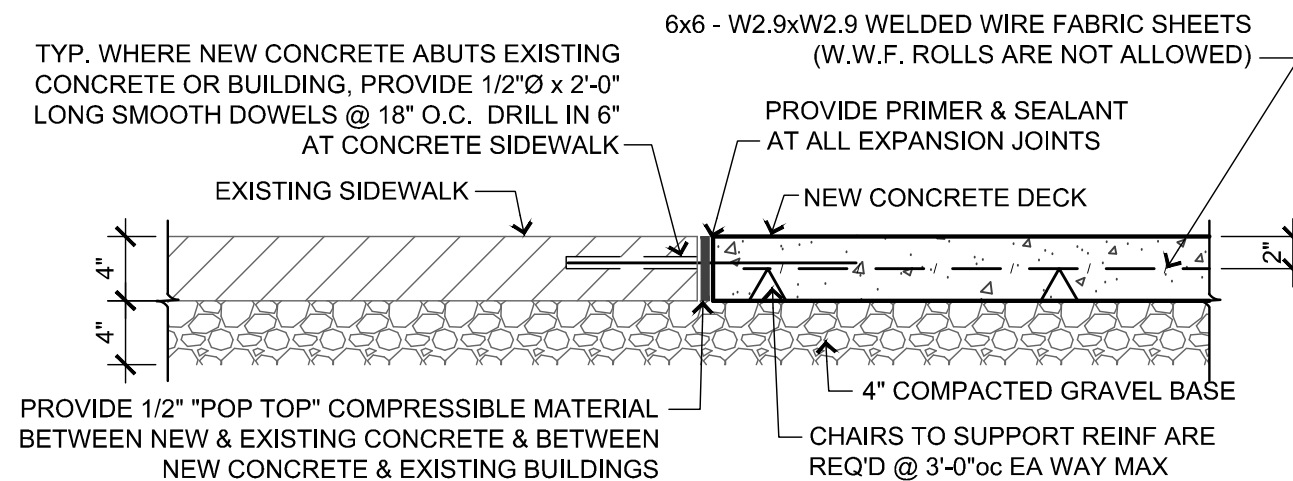
SCALE: 3" = 1'-0"

1. ALL REBAR SUPPORTS & TIES SHALL BE SPACED AT 2'-0" O.C. EACH WAY MAX. NO EXCEPTIONS
2. SLOPE DECK AWAY FROM POOL COPING 1/8" PER FOOT.
3. SAW CUT CONTROL JOINTS 1/4" x 1-1/2" DEEP AT THE TIME OF PLACEMENT. CONTROL JOINT SPACING SHALL NOT EXCEED 12'-0" IN ANY DIRECTION AS CLOSE TO SQUARE AS IS POSSIBLE WITH MAX ASPECT RATIO 1.25:1.0.
4. PROVIDE EXPANSION JOINTS IN CONCRETE DECK AT A MAX. OF 48'-0" O.C. U.N.O. ON PLANS. TOOL EDGES AT EXPANSION JOINTS. AT EXPANSION JOINTS, PROVIDE COMPRESSIBLE MATERIAL W/ (3) - 1/2"Ø x 2'-0" LONG SMOOTH DOWELS. REBAR SHALL NOT BE CONTINUOUS THROUGH THE EXPANSION JOINTS.



3 WALL REPAIR - WADING POOL

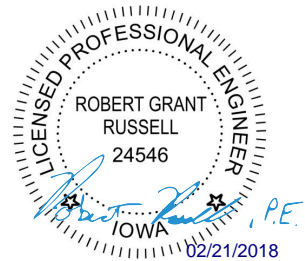
SCALE: 1 1/2" = 1'-0"



4 NEW CONCRETE DECK SLAB-ON-GRADE

SCALE: 3" = 1'-0"

Norton & Schmidt
 Consulting Engineers, L.L.C.
 North Kansas City, MO • Atlanta, GA
 311 East 11th Avenue
 North Kansas City, MO 64116
 Phone: (816) 421-4232
 Fax: (816) 421-1956
 www.nortonschmidt.com
 N&S JOB NUMBER: 2017-2280
 © 2017 Norton & Schmidt Consulting Engineers

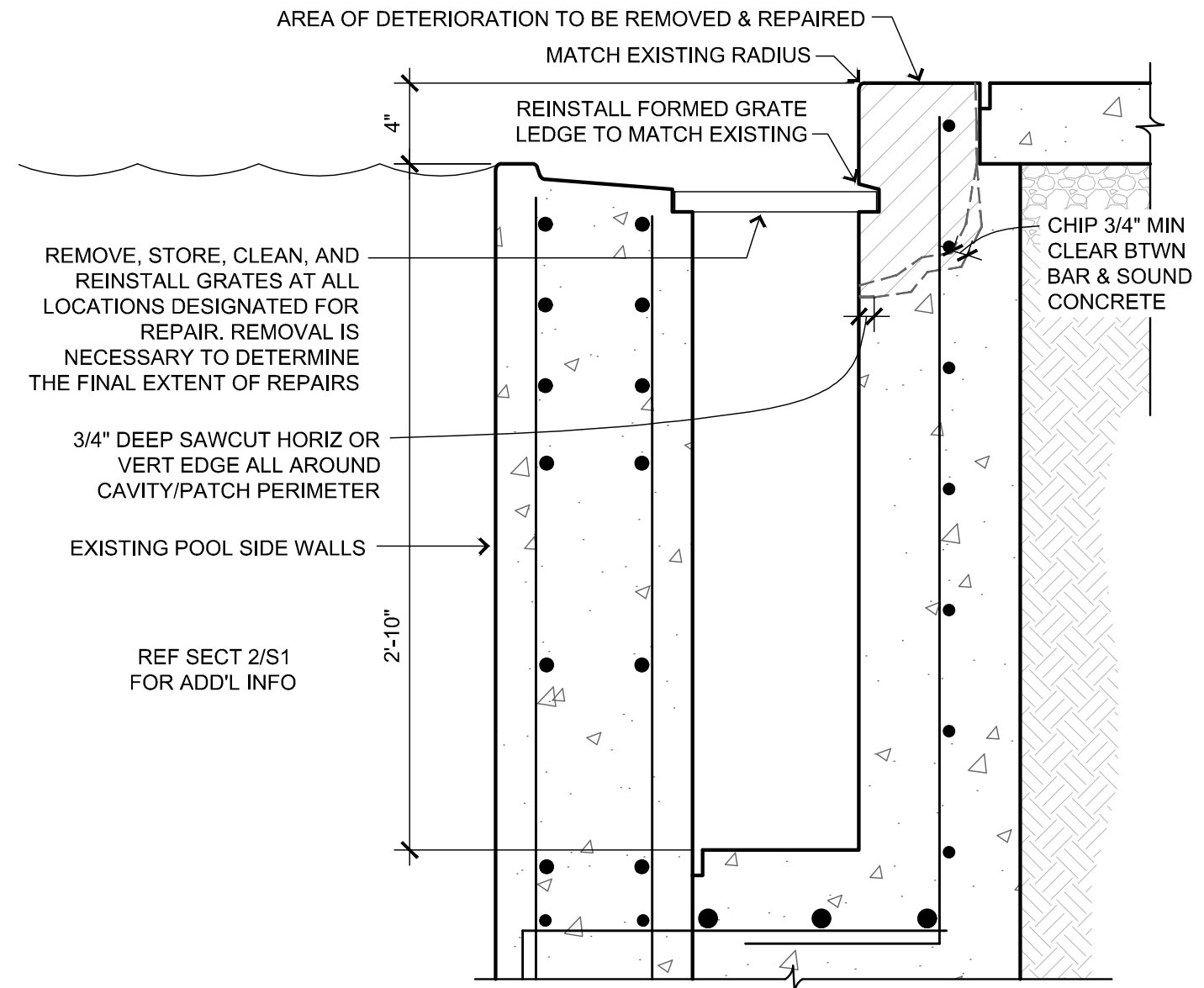


ELLIS MUNICIPAL POOL REPAIRS

2000 Ellis Blvd NW
 Cedar Rapids, IA 52405
 Owner: City of Cedar Rapids, IA

DATE:	DESCRIPTION:
02/21/18	BID SET

S3



REMOVE, STORE, CLEAN, AND REINSTALL GRATES AT ALL LOCATIONS DESIGNATED FOR REPAIR. REMOVAL IS NECESSARY TO DETERMINE THE FINAL EXTENT OF REPAIRS

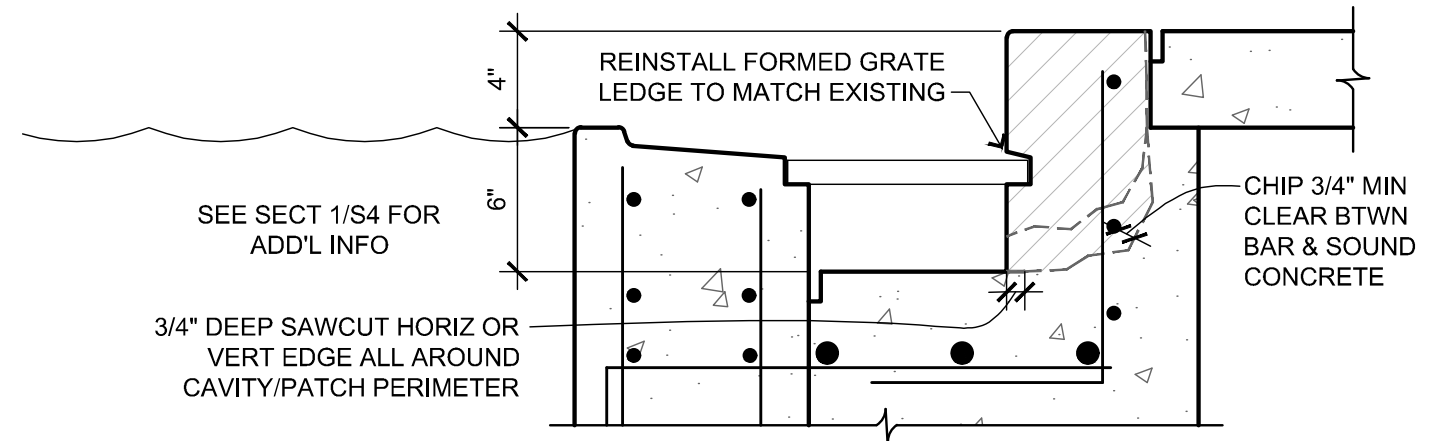
3/4" DEEP SAWCUT HORIZ OR VERT EDGE ALL AROUND CAVITY/PATCH PERIMETER

EXISTING POOL SIDE WALLS

REF SECT 2/S1 FOR ADD'L INFO

2'-10"

1 LOW ELEVATION GUTTER REPAIR - MAIN POOL
SCALE: 1 1/2" = 1'-0"



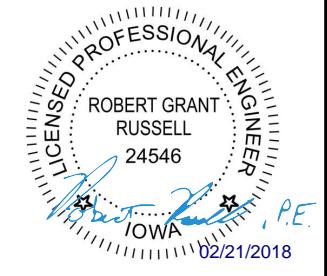
SEE SECT 1/S4 FOR ADD'L INFO

3/4" DEEP SAWCUT HORIZ OR VERT EDGE ALL AROUND CAVITY/PATCH PERIMETER

6"

2 HIGH ELEVATION GUTTER REPAIR - MAIN POOL
SCALE: 1 1/2" = 1'-0"

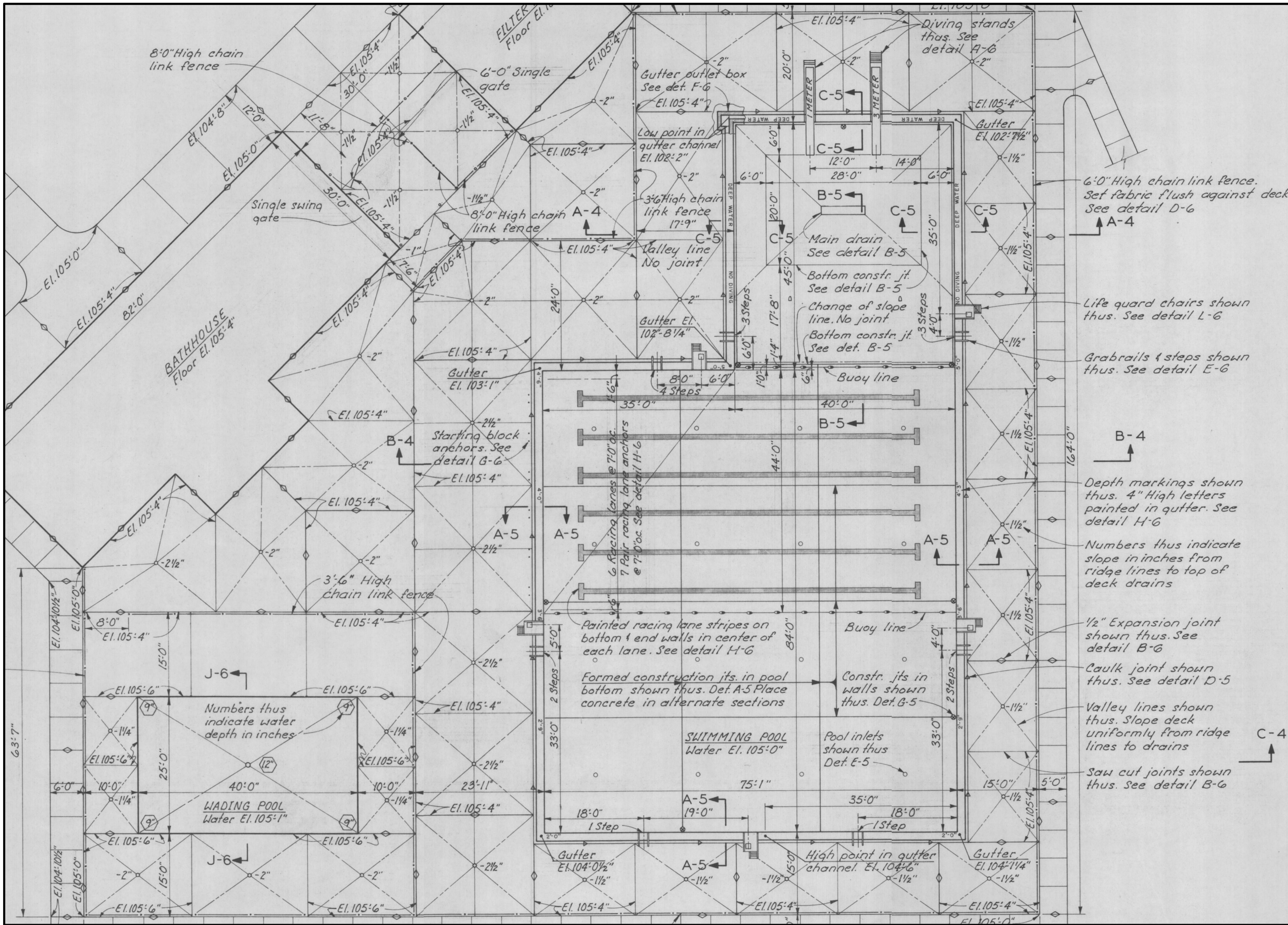
Norton & Schmidt
Consulting Engineers, L.L.C.
North Kansas City, MO • Atlanta, GA
311 East 11th Avenue
North Kansas City, MO 64116
Phone: (816) 421-4232
Fax: (816) 421-1956
www.nortonschmidt.com
N&S JOB NUMBER: 2017-2280
© 2017 Norton & Schmidt Consulting Engineers



ELLIS MUNICIPAL POOL REPAIRS
2000 Ellis Blvd NW
Cedar Rapids, IA 52405
Owner: City of Cedar Rapids, IA

DATE:	DESCRIPTION:
02/21/18	BID SET

S4



Norton & Schmidt
 Consulting Engineers, L.L.C.
 North Kansas City, MO • Atlanta, GA
 311 East 11th Avenue
 North Kansas City, MO 64116
 Phone: (816) 421-4232
 Fax: (816) 421-1956
 www.nortonschmidt.com
 N&S JOB NUMBER: 2017-2280
 © 2017 Norton & Schmidt Consulting Engineers



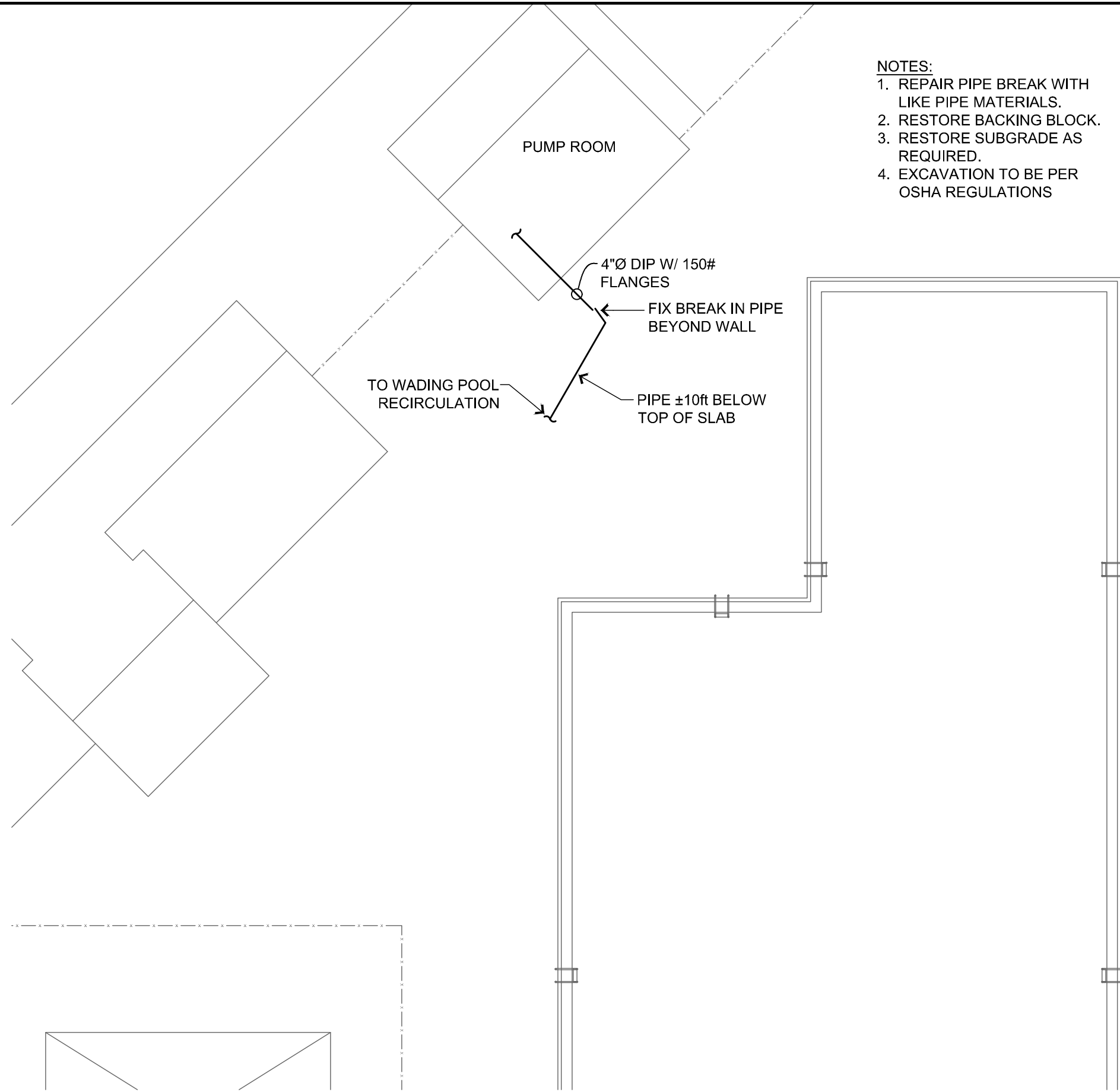
ELLIS MUNICIPAL POOL REPAIRS

2000 Ellis Blvd NW
 Cedar Rapids, IA 52405
 Owner: City of Cedar Rapids, IA

DATE:	DESCRIPTION:
02/21/18	BID SET

S5

- 6'-0" High chain link fence. Set fabric flush against deck See detail D-6
- Life guard chairs shown thus. See detail L-6
- Grabrails & steps shown thus. See detail E-6
- Depth markings shown thus. 4" High letters painted in gutter. See detail H-6
- Numbers thus indicate slope in inches from ridge lines to top of deck drains
- 1/2" Expansion joint shown thus. See detail B-6
- Caulk joint shown thus. See detail D-5
- Valley lines shown thus. Slope deck uniformly from ridge lines to drains
- Saw cut joints shown thus. See detail B-6



NOTES:

1. REPAIR PIPE BREAK WITH LIKE PIPE MATERIALS.
2. RESTORE BACKING BLOCK.
3. RESTORE SUBGRADE AS REQUIRED.
4. EXCAVATION TO BE PER OSHA REGULATIONS



ELLIS MUNICIPAL POOL REPAIRS

2000 Ellis Blvd NW
 Cedar Rapids, IA 52405
 Owner: City of Cedar Rapids, IA

DATE:	DESCRIPTION:
02/21/18	BID SET



1 PLUMBING REPAIR PLAN
 SCALE: 1/16" = 1'-0"

Norton & Schmidt
 Consulting Engineers, L.L.C.
 North Kansas City, MO • Atlanta, GA
 311 East 11th Avenue
 North Kansas City, MO 64116
 Phone: (816) 421-4232
 Fax: (816) 421-1956
 www.nortonschmidt.com
 N&S JOB NUMBER: 2017-2280
 © 2017 Norton & Schmidt Consulting Engineers

P1